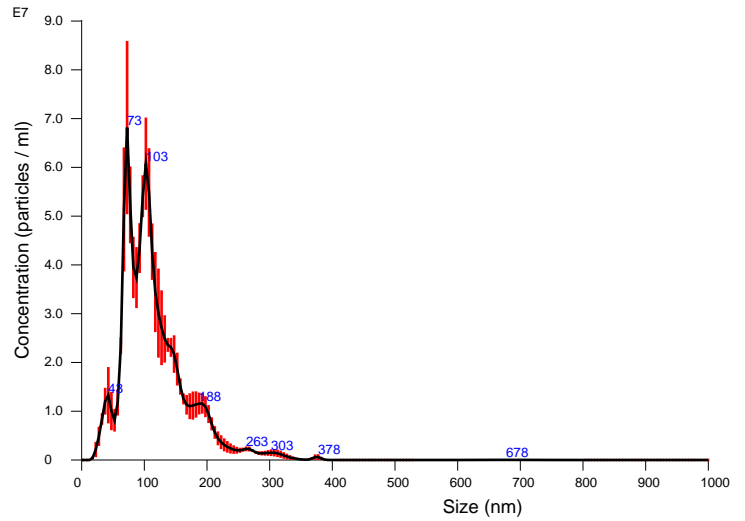


FTLA Concentration / Size graph for Experiment:
Aerated 2018-12-06 12-33-42



Averaged FTLA Concentration / Size for Experiment:
Aerated 2018-12-06 12-33-42
Error bars indicate + / - 1 standard error of the mean

Included Files

Aerated 2018-12-06 12-34-59
Aerated 2018-12-06 12-36-09
Aerated 2018-12-06 12-37-30
Aerated 2018-12-06 12-38-40

Details

NTA Version: NTA 3.1 Build 3.1.46
Script Used: SOP Standard Measurement 12-33-42PM 06Dec2018.txt
Time Captured: 12:33:42 06/12/2018
Operator:
Pre-treatment:
Sample Name:
Diluent:
Remarks:

Capture Settings

Camera Type: sCMOS
Camera Level: Manual settings used
Slider Shutter: 1300
Slider Gain: 512
FPS: 25.0
Number of Frames: 1498
Temperature: 21.1 - 21.2 °C
Viscosity: (Water) 0.971 - 0.974 cP
Dilution factor: Dilution not recorded
Syringe Pump Speed: 25

Analysis Settings

Detect Threshold: 5
Blur Size: Auto
Max Jump Distance: Auto: 14.3 - 18.0 pix

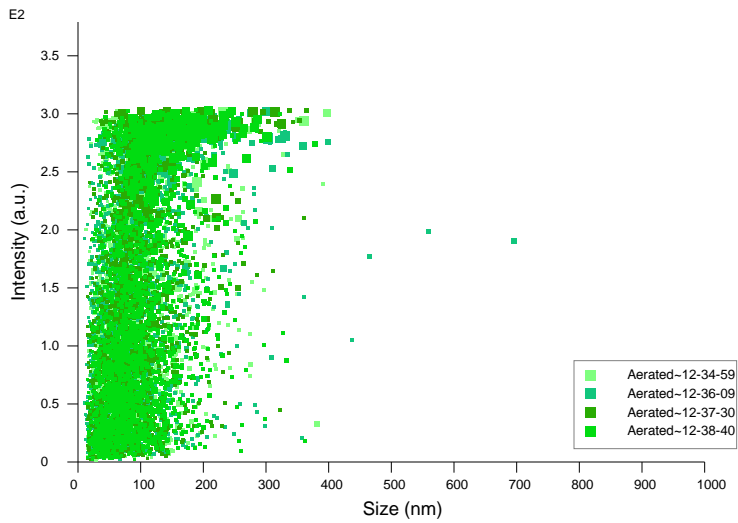
Results

Stats: Merged Data

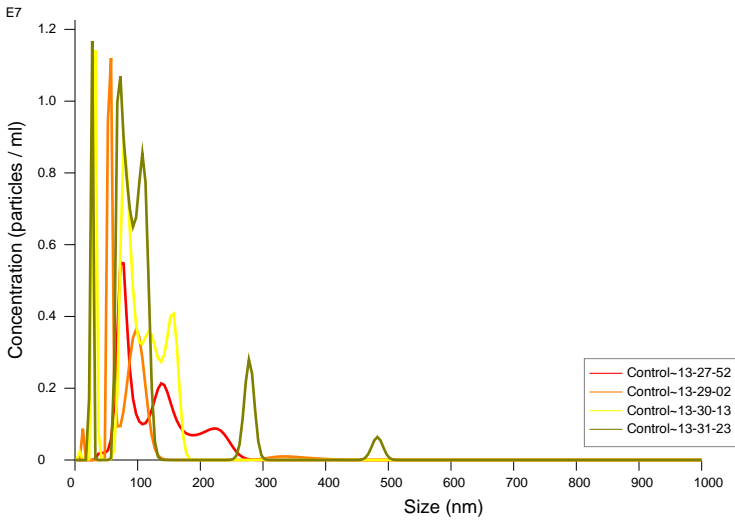
Mean: 115.9 nm
Mode: 72.6 nm
SD: 54.9 nm
D10: 60.3 nm
D50: 99.1 nm
D90: 183.4 nm

Stats: Mean +/- Standard Error

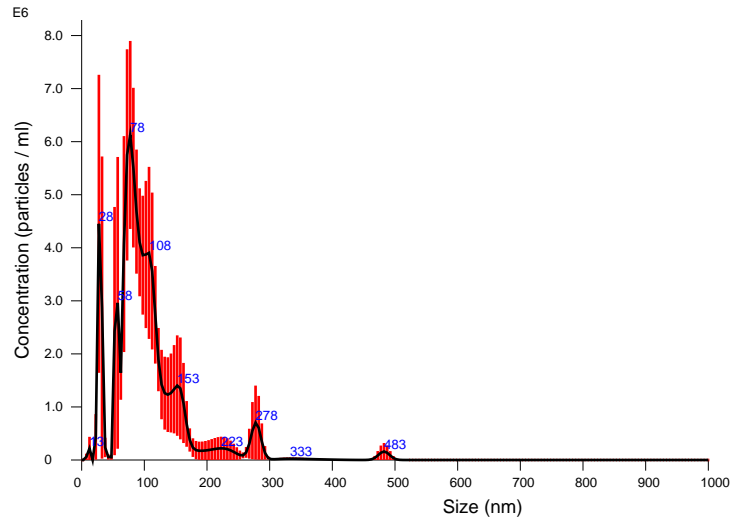
Mean: 115.9 +/- 3.2 nm
Mode: 87.4 +/- 8.4 nm
SD: 54.7 +/- 3.4 nm
D10: 59.9 +/- 1.4 nm
D50: 100.0 +/- 3.2 nm
D90: 181.0 +/- 5.2 nm
Concentration: 9.81e+008 +/- 6.15e+007 particles/ml
49.8 +/- 3.1 particles/frame
104.0 +/- 7.9 centres/frame



Intensity / Size graph for Experiment:
Aerated 2018-12-06 12-33-42



FTLA Concentration / Size graph for Experiment:
Control 2018-12-06 13-26-35



Averaged FTLA Concentration / Size for Experiment:
Control 2018-12-06 13-26-35
Error bars indicate + / - 1 standard error of the mean

Included Files

Control 2018-12-06 13-27-52
Control 2018-12-06 13-29-02
Control 2018-12-06 13-30-13
Control 2018-12-06 13-31-23

Details

NTA Version: NTA 3.1 Build 3.1.46
Script Used: SOP Standard Measurement 01-26-35PM 06Dec2018.txt
Time Captured: Operator: 13:26:35 06/12/2018
Pre-treatment:
Sample Name:
Diluent:
Remarks:

Capture Settings

Camera Type: sCMOS
Camera Level: Manual settings used
Slider Shutter: 1300
Slider Gain: 512
FPS: 25.0
Number of Frames: 1498
Temperature: 22.4 - 22.6 °C
Viscosity: (Water) 0.940 - 0.943 cP
Dilution factor: Dilution not recorded
Syringe Pump Speed: 25

Analysis Settings

Detect Threshold: 5
Blur Size: Auto
Max Jump Distance: Auto: 14.0 - 26.8 pix

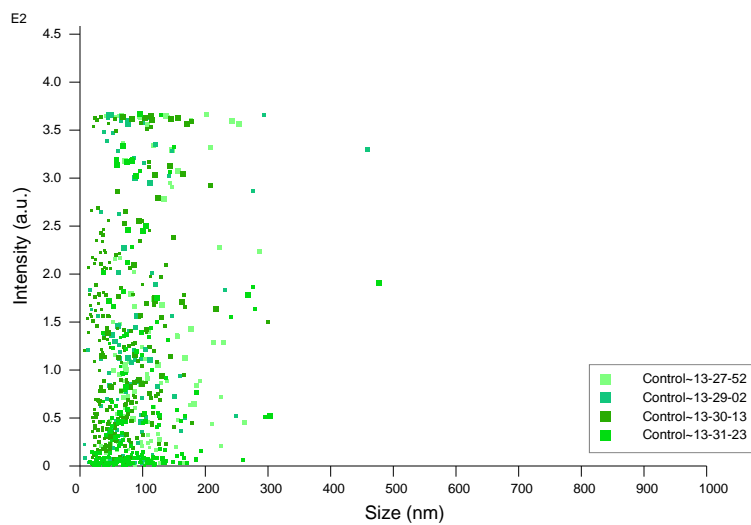
Results

Stats: Merged Data

Mean: 104.8 nm
Mode: 76.9 nm
SD: 65.2 nm
D10: 44.8 nm
D50: 85.4 nm
D90: 158.3 nm

Stats: Mean +/- Standard Error

Mean: 104.3 +/- 8.8 nm
Mode: 47.4 +/- 11.1 nm
SD: 58.6 +/- 9.3 nm
D10: 40.7 +/- 9.4 nm
D50: 88.0 +/- 8.4 nm
D90: 183.3 +/- 34.7 nm
Concentration: 8.38e+007 +/- 1.66e+007 particles/ml
4.3 +/- 0.8 particles/frame
15.6 +/- 5.9 centres/frame



Intensity / Size graph for Experiment:
Control 2018-12-06 13-26-35